

FLANGE TYPE THERMOWELLS

Technical Data

Welded type: WSF, WLF

Drilled bar stock type: BSF, BLF, BTF, BTLF, BPSF, BPLF

Material: SS304, SS316, SS316L, Monel, Hastelloy C 276, Brass, Carbon Steel, Titanium (special material available upon request)

Process connection: ½" ~ 4" flange available, flange rating—ANSI, DIN, JIS available (special flange upon request)

Instrument connection: ½"NPT, ¾" NPT Female available (special thread upon request)

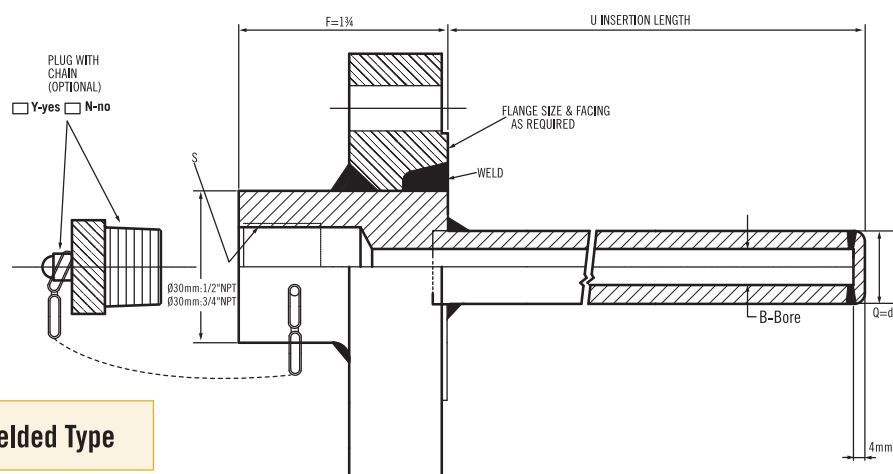


Flange Wells Series

* F: Length is suitable for flange size ¾", 1", 1½", 2", and flange rating 150# & 300#.

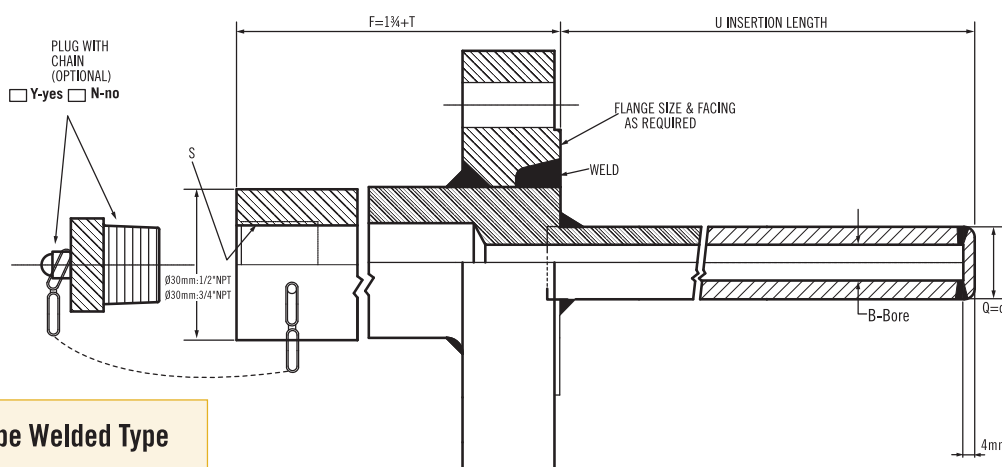
Other size and rating (F) length is by makers standard.

Model : WSF(Welded Standard Flange Type)



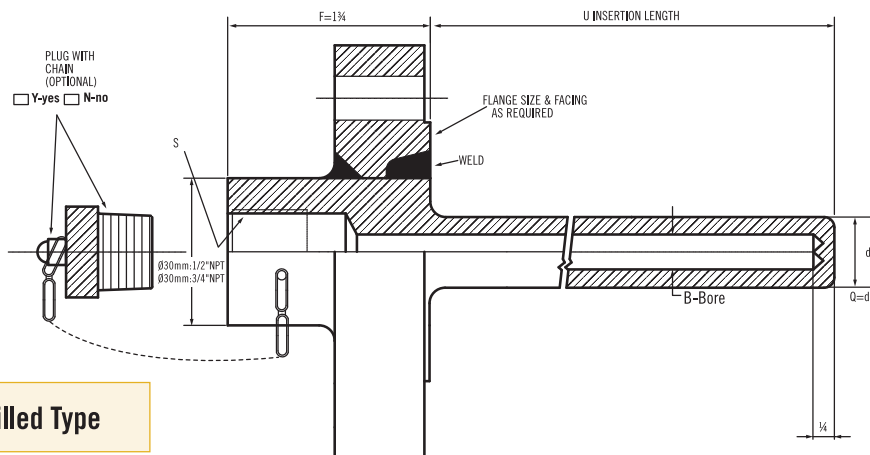
Tube Welded Type

Model : WLF(Welded Lag Flange Type)



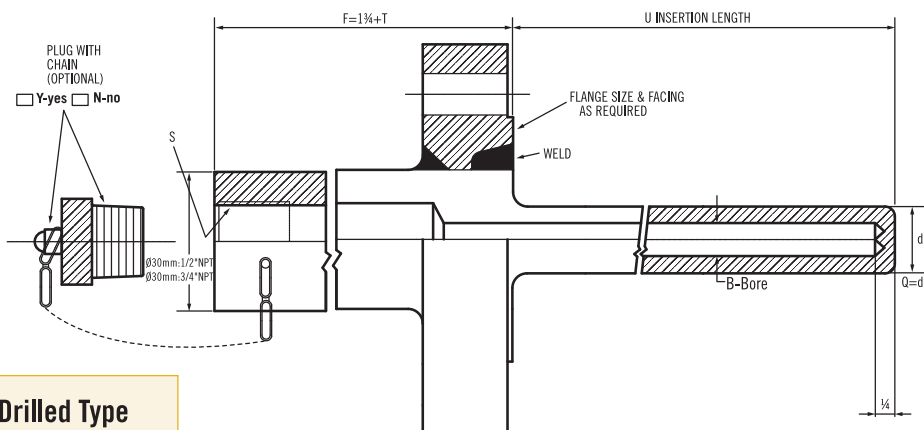
Tube Welded Type

Model : BSF(Straight Standard Flange Type)



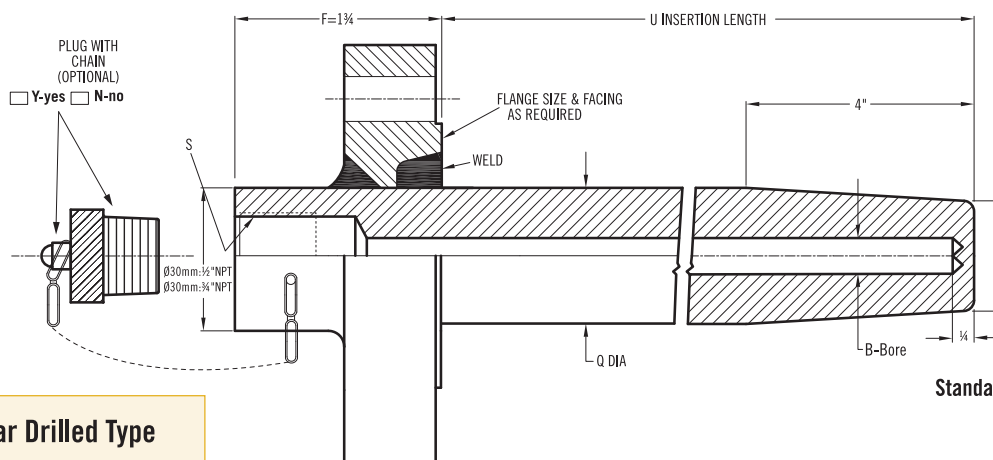
Bar Drilled Type

Model : BLF(Straight Lag Extension Flange Type)



Bar Drilled Type

Model : BTF(Tapered Standard Flange Type)

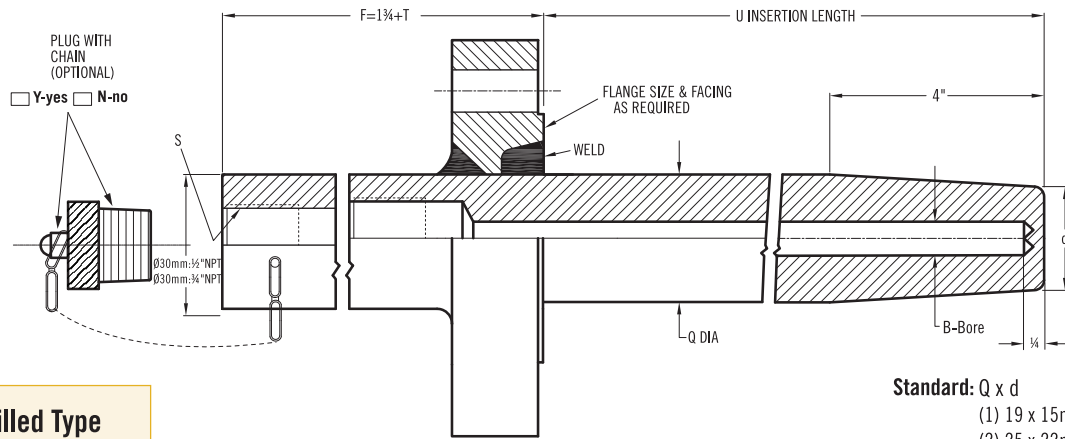


Bar Drilled Type

Standard: Q x d

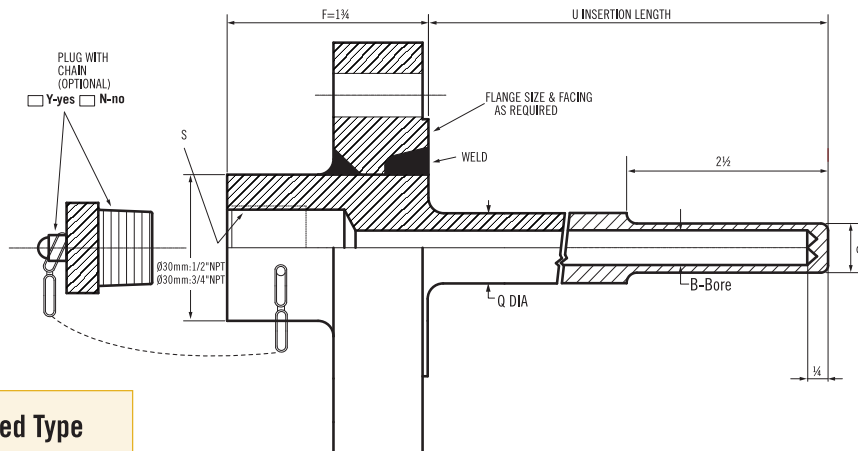
- (1) 19 x 15mm
- (2) 25 x 22mm
- (3) 22 x 19mm

Model : BTLF(Tapered Lag Extension Flange Type)



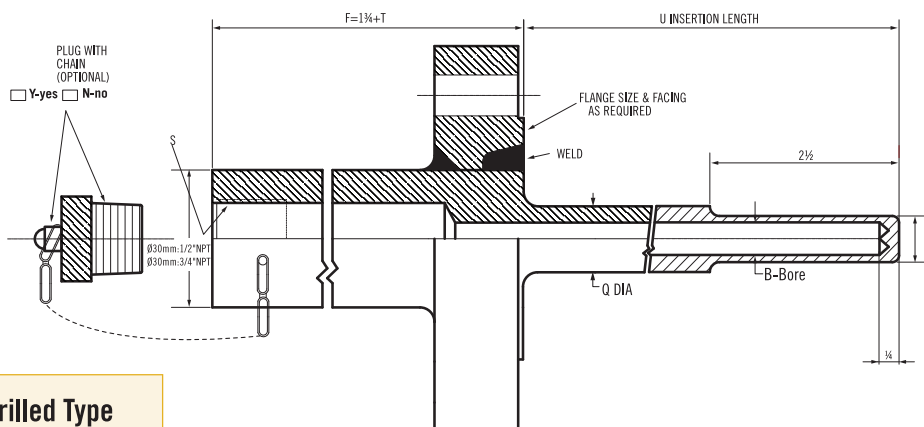
Bar Drilled Type

Model : BPSF(Stepped Standard Flange Type)



Bar Drilled Type

Model : BPLF(Stepped Lag Extension Flange Type)



Bar Drilled Type

[illegible]