

PULSE SCALER

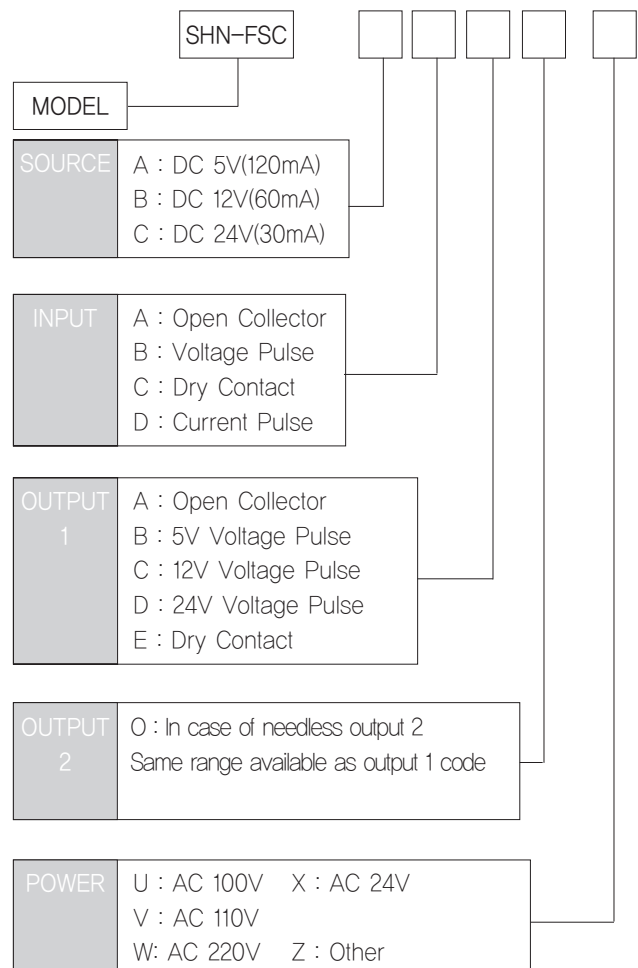
SHN-FSC



Converting unfactor pulse into factor pulse and transmitting in isolated condition.

- Unifying the output waveform.
- Positive displacement flowmeters or turbine flowmeters.
- Converting dry contact pulse signals from a rotating machine into an engineering unit.
- Magnetic tachometers.
- Proximity switches.
- Oval flowmeters.
- Contains overvoltage protection circuit.
- Selecting Power Voltage AC 110V/220V converting S/W is located in the interior of the set. When you converting the voltage, convert the S/W in socket PCB.

MODEL & SUFFIX CODE SELECTION



GENERAL SPECIFICATIONS

Isolation/Type	Input to output to power		
Power Supply	AC rating $\pm 10\%$, approx. 4VA		
Insulation Resistance	DC rating $\pm 10\%$, (ripple 10%)100mA		
	Greater than 100M Ω with DC 500V		
Dielectric Strength	Input – Power		1 minute
	Input – Output	AC 2500V	
	GND – Power	AC 1000V	
Operating Temperature/Humidity	-20~60°C / 90%(N.C)		
Storage Temperature/Humidity	-20°C~80°C / 95%(N.C)		
Dimensions	8 pin:W50xH85xD122(mm)		
	11 pin:W50xH85xD133(mm)		
Case Material	ABS Resin (black)		
Weight	about 400g		
Mounting	Wall & Rail mounting		

SIGNAL TRANSMITTER

SHN-FSC

INPUT & OUTPUT SPECIFICATIONS

Input Specification

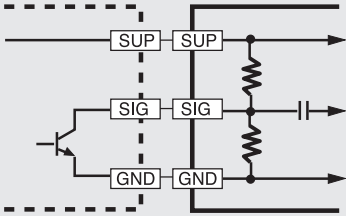
Specifications	Report	
Frequency Range	0 – 10kHz	
Open Collector Spec	Pulse Width	10msec. at < 20Hz
	Duty Ratio	20~80%
	Sensing	DC 12V at 3mA
	Input Amplitude	≤2V for ON, ≥3V for off
Voltage Pulse Spec	Square or Sine Waveforms	5μsec(Min)
	Pulse Width	600Ω (Min)
	Duty Ratio	10 msec. at 0~20Hz
	Input Amplitude	20~80%
Current Pulse Spec	Input Impedance	500mV(p-p)~50V(p-p)
	Input Impedance	62KΩ
	Input Impedance	250Ω

Output Specification

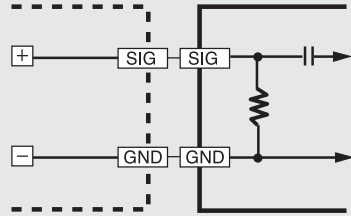
Specifications	Report	
Open Collector Spec	Voltage	DC 60V(Max) AC 60V(p-p)
	Load Current	0.4 A(Max)
	Load Impedance	1.4Ω (Min)
Voltage Pulse Spec	Level	High:V±10% Low:0≤0.5V
	Load Impedance	600Ω (Min)
Current Pulse Spec	Voltage	DC 60V(Max) AC 125V(p-p)
	Load Current	1A(Max)

INPUT CONNECTION EXAMPLES

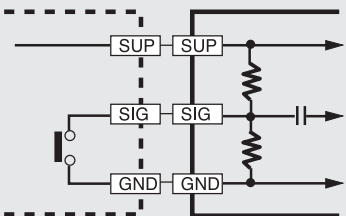
1. Open Collector



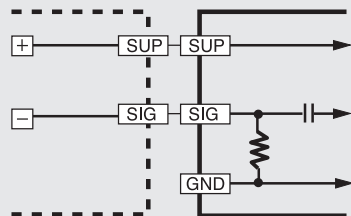
2. Voltage Pulse



3. Dry Contact

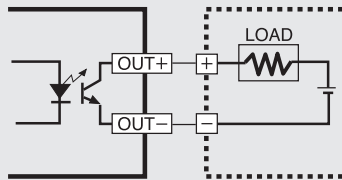


4. Current Pulse

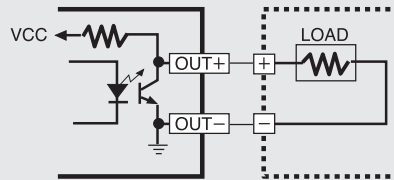


OUTPUT CONNECTION EXAMPLES

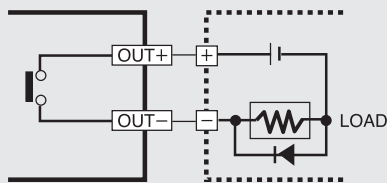
1. Open Collector



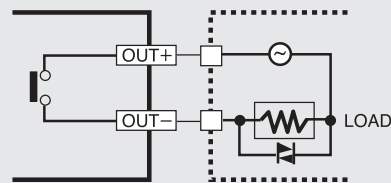
2. Voltage Pulse



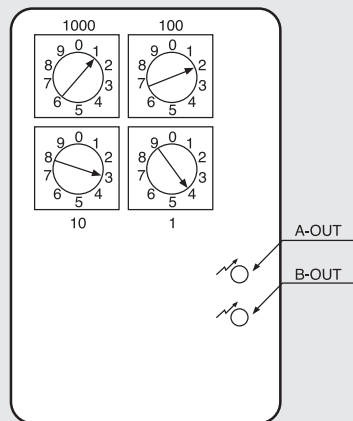
3. Dry Contact



4. Dry Contact(AC)

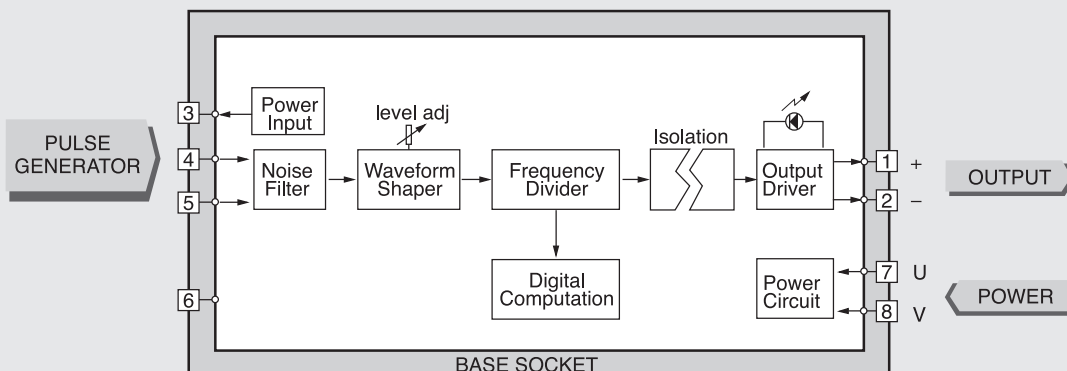


FREQUENCY RANGE SETTING (e.g) 10000 pulse to 1234 pulse



BLOCK DIAGRAM

1 Point Output



SIGNAL TRANSMITTER SHN-FSC

2 Point Output

