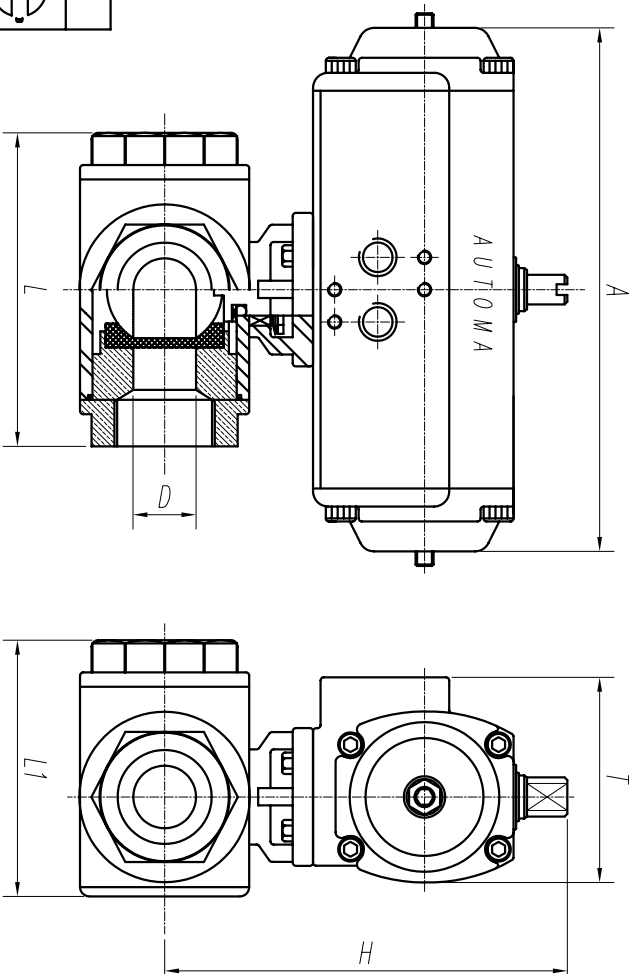
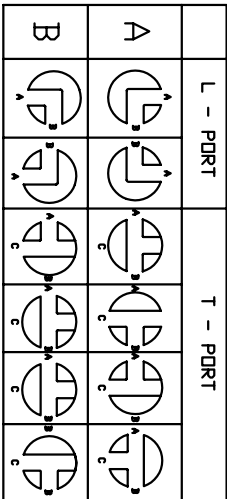
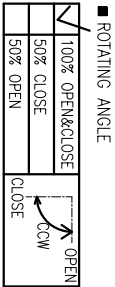


3-11

FOR APPROVAL



■ DIMENSION(mm)

SIZE		MODEL	A	T	H	L	ØD
mm	inch						
10A	3/8"	AD40-10S3	108	60	130	80	12
15A	1/2"	AD40-15S3	108	60	143	80	12.7
20A	3/4"	AD40-20S3	178	69	153	87.5	15
25A	1"	AD50-25S3	178	69	161	100	20
32A	1 1/4"	AD40-32S3	232	82	198	123	25
40A	1 1/2"	AD65-40S3	232	82	203	142.2	32
50A	2"	AD65-50S3	232	82	222	170.6	40

■ Actuator Specification

TITLE	
3-WAY SCREWED BALL VALVE	
NO	DESCRIPTION
1	CYLINDER
2	PISTON
3	COVER
4	SHAFT
5	BOTTOM O-RING
6	BOTTOM RING
7	PISTON O-RING
8	PISTON GUIDE RING
9	PISTON GUIDE PAD
10	SHAFT GUIDE RING
11	TOP O-RING
12	TOP GUIDE RING
13	THRUST WASHER
14	SNAP RING
15	COVER O-RING
16	COVER BOLT
17	ADJUST O-RING
18	WASHER
19	ADJUST O-RING
20	NUT
21	SUS316 / BODY
22	PTFE / SEAT
23	SUS316 / BALL

Specification

Type

DOUBLE ACTING

Operating Medium	Compressed dry air					
Standard operating pressure	5kg/cm <sup>2</sup>					
Operating pressure range	4 ~ 7kg/cm <sup>2</sup>					
Operating angle	90° (0°~+5°)					
Operating time (close → open)	Maximum 30 Second (Speed control)					
Service temperature	-20°C ~ +65°C					
Operating Type	Soch - Yoke (AD40 / R&P)					
Designed by	Checked by	Approved by - date	File name	Date	Scale	Unit
장원철			SCREW	2005.02.05	N:S	mm



AUTOMA

3PIECE SCREW BALL VALVE-DOUBLE

Model AD 3-PC Drawing no. A050205-02-03